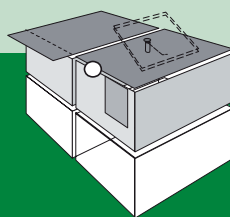
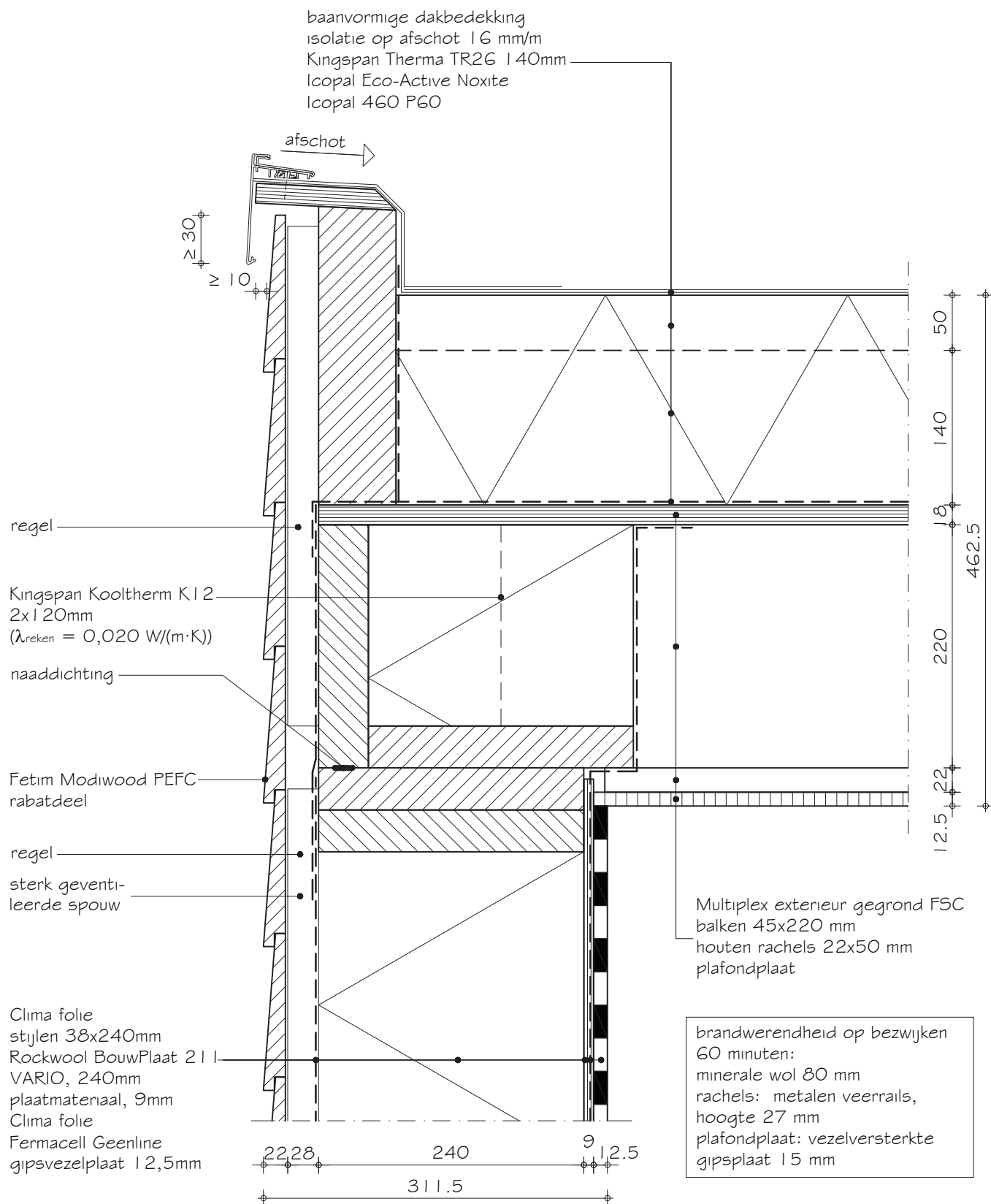


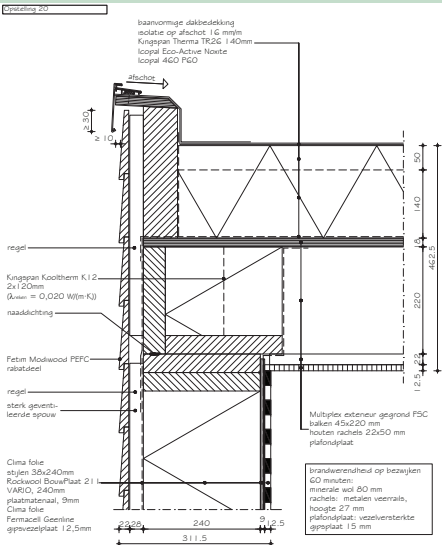
**Dragstructuur** : houtskeletbouw  
**Gevelbouw** : houten binnenspouwblad en hout of plaatmateriaal als gevelbekleding  
**Variant-detail** : houten vloer, daktrim



**P.409.4.2.02.RK W + WG**

Opstelling 20





**Bouwfysische prestaties**

Bouwdeel	R <sub>c</sub> of U <sub>0,13</sub>		R <sub>A</sub>	Bouwdeel	R <sub>c</sub> of U <sub>0,13</sub>		R <sub>A</sub>
	(m <sup>2</sup> ·K)/W	W/(m <sup>2</sup> ·K)			(m <sup>2</sup> ·K)/W	W/(m <sup>2</sup> ·K)	

**Knooppunt**

$\Psi_k$	$\Psi_{phpp}$	$\Psi_g$	$\Theta_{s,i;0,25}$ of $\Theta_{s,i;0,50}$	$f_{n,0,25}$ of $f_{n,0,50}$	C <sub>vast</sub>	C <sub>draaiend</sub>	C <sub>dakvoet</sub>	C <sub>lek</sub>	D <sub>nT,A,K</sub>	L <sub>nT,A</sub>
W/(m <sup>1</sup> ·K)			°C	°C			dm <sup>3</sup> /(s·m <sup>1</sup> ·Pa <sup>n</sup> )	dm <sup>3</sup> /(s·Pa <sup>n</sup> )	dB	dB

**3 - vlaks in combinatie met details:**

$\Theta_{s,i;0,25}$ of $\Theta_{s,i;0,50}$	$f_{n,0,25}$ of $f_{n,0,50}$
°C	°C

**Ontwerp**

**Uitvoering**